



Bartlams

2 Birch Glade, FINCHFIELD, WV3 9ES

£290,000

****NO UPWARD CHAIN**** Dormer-style Semi-Detached residence enjoying a pleasant setting in the highly popular locality off The Spinney, Finchfield with a selection of amenities within close proximity. Versatile two-bedroom accommodation with flexible arrangement. Birch Glade is located in an outstanding cul-de-sac and offers scope for some updating with a Large Living Room. Separate Dining Room. Fitted Breakfast Kitchen. Downstairs Bedroom. And Utility Room with W.C. On the first floor is a large Bedroom and a Bathroom. The property offers plenty of storage space, detached rear garage and off-road parking with neatly landscaped gardens. Viewings are highly recommended, call our team to arrange your viewing **ASAP!**

- NO UPWARD CHAIN.
- QUIET CUL-DE-SAC LOCATION.
 - TWO BEDROOMS.
 - LARGE LIVING ROOM.
 - SEPRATE DINING ROOM.
 - DETACHED GARAGE.
 - OFF ROAD PARKING.
- DOUBLE GLAZING AND CENTRAL HEATING.

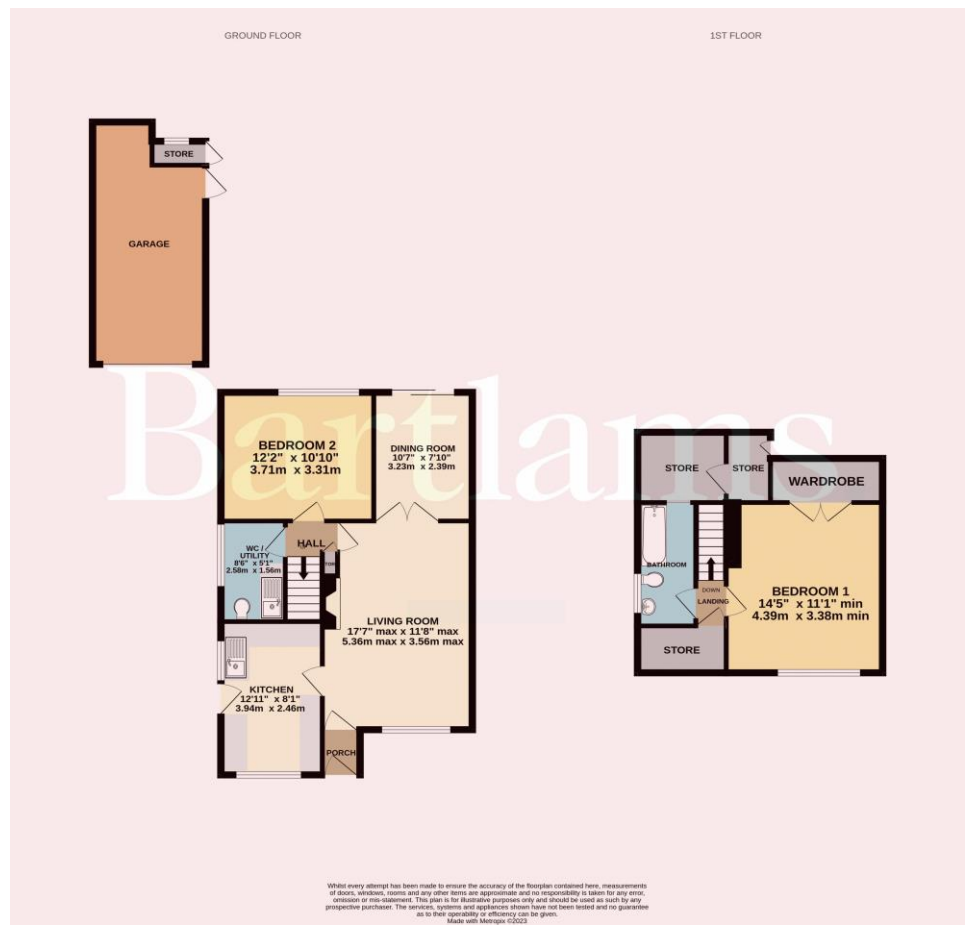


Freehold
COUNCIL TAX BAND - C
EPC RATING -

NOTICE: These particulars, although believed to be correct, do not constitute any part of an offer or contract. All statements contained in these particulars as to this property are made without responsibility and are not to be relied upon as statements or representations of warranty whatsoever in relation to property. Any intending purchaser must satisfy themselves by inspection or otherwise as to the correctness each of the statements contained in these particulars. All measurements are approximate and for illustrative purposes only. Photographs are produced for general information and it must not be inferred that any item shown is included in the sale.

DISCLOSURE: As a professional Estate Agency our clients employ us to look after their best interests. This includes providing them with full details of offers made to purchase their property. To ensure our obligations to our clients are met we need to check the status of all potential purchasers. If you make an offer on this property we will ask a member of The Finance Family to contact you to verify your status. They are a leading firm of Independent Financial Advisers and Mortgage Brokers. Should they transact any business resulting from our introduction then we may receive a commission.

Bartlams



PLEASE SIGN BELOW TO AGREE THAT THE DETAILS ARE ACCURATE TO THE BEST OF YOUR KNOWLEDGE

SIGNED:

DATE:

24 High Street TETTENHALL Wolverhampton West Midlands WV6 8QT

01902 759888

tettenhallsales@bartlams.co.uk

www.bartlams.co.uk



